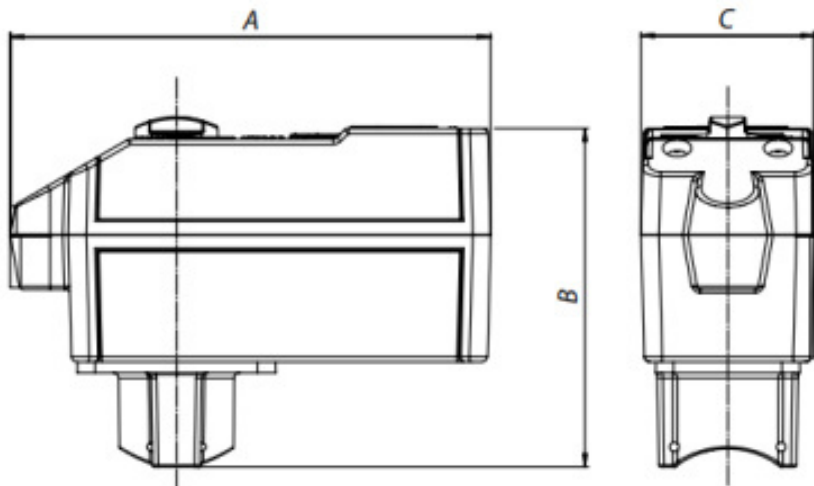


13405 SERIES - ELECTRIC ON/OFF ACTUATOR WITH QM CONNECTION.



SPECIFICATION

CONNECTION: QUICK MOUNTING
90° WORK ANGLE
POWER SUPPLY: 24VAC 50/60 HZ
POWER CONSUMPTION: 4 VA
INPUT SIGNAL: SPST (WITH INTERNAL RELAY)
RUNNING TIME: 60S
MOTOR TYPE: BIDIRECTIONAL
PROTECTION: NEMA 2
OPERATING TEMPERATURE: $-4^{\circ} \div +158^{\circ}\text{F}$

MADE IN ITALY

COMPONENTS

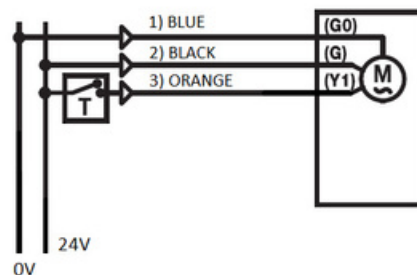
N°	DESCRIPTION	MATERIAL
1	ACTUATOR	VARIOUS

DIMENSIONS

CODE	A	B	C	INCHES
13405	5.12	3.54	1.89	

WIRING DIAGRAM

- 1 **BLUE** 0V POWER SUPPLY
- 2 **BLACK** 24V POWER SUPPLY
- 3 **ORANGE** COMMAND INPUT



TERMINAL	DIRECTION	DESCRIPTION	CONNECTION
1 BLUE	POWER	0 V	CONNECT TO 0V LINE OF POWER SUPPLY
2 BLACK	POWER	24 V	CONNECT TO 24V LINE OF POWER SUPPLY
3 ORANGE	IN	COMMAND	CONNECT TO 24V POWER LINE TO OPEN THE VALVE